



**COP28UAE**

# Early Warning for All in Africa: Implementation of the African Multi Hazards Early Warning and Early actions systems

---

UN Office for Disaster Risk Reduction

6 December 2023, 18:15-19:15



**UNDRR**

UN Office for Disaster Risk Reduction

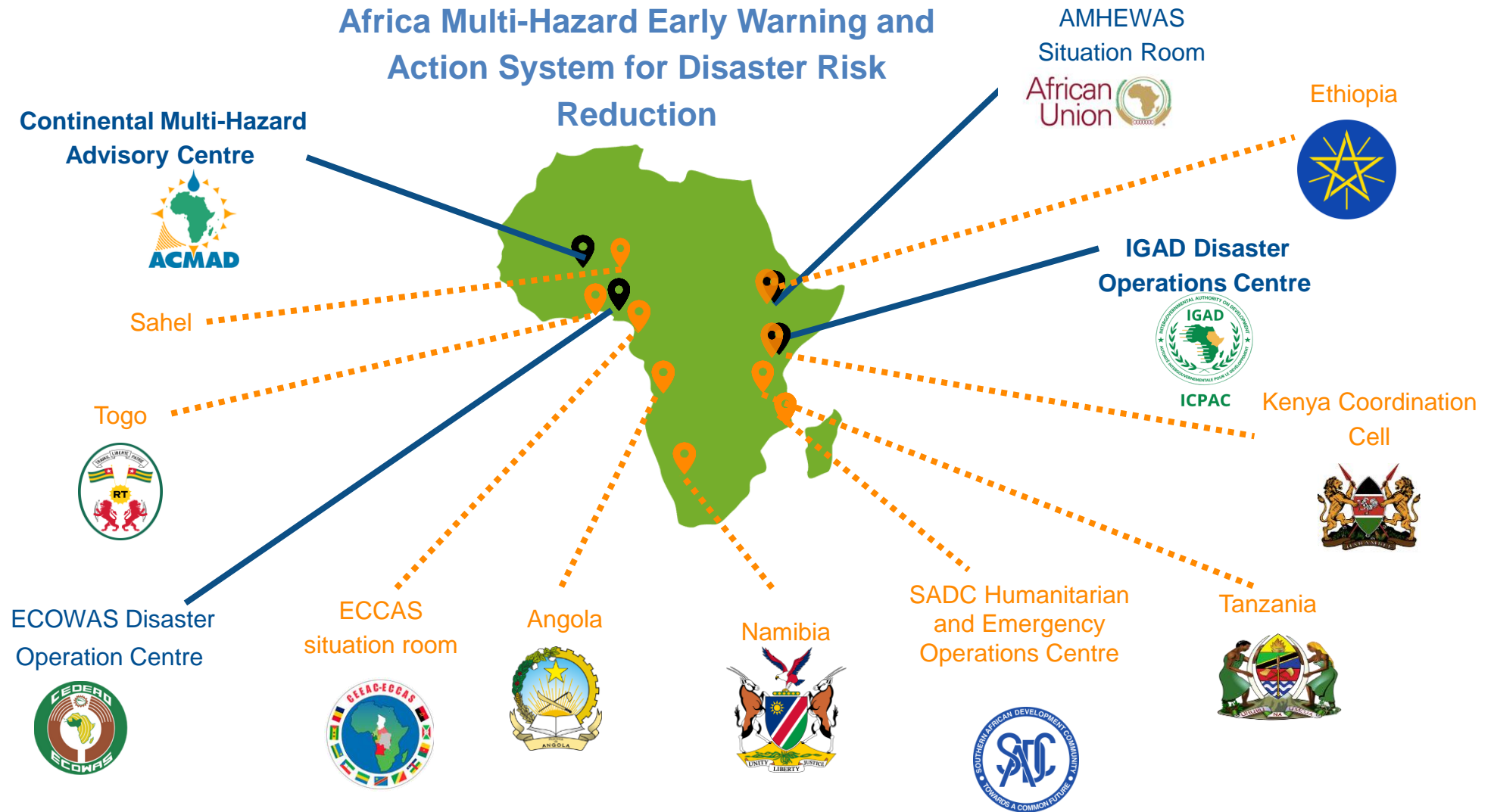


**SENDAI FRAMEWORK**

FOR DISASTER RISK REDUCTION 2015-2030

# AMHEWAS

## Africa Multi-Hazard Early Warning and Action System for Disaster Risk Reduction



AMHEWAS Disaster Situation Room  
Addis Ababa

African Multi-Hazard Advisory  
Centre  
Niamey



ACMAD generates regular continental hazard and disaster situation reports, continental climate trends, and impact-based advisories.



AUC trains Member States and issues advisories through twice weekly "Continental Watch" bulletins and monthly disaster outlooks. Subregional situation rooms feed data to the continental level.

Disaster Operation Centre  
Abuja



Disaster Situation Room  
Douala



Humanitarian and Emergency  
Operations Centre  
Nacala



Disaster Operations Centre  
Nairobi



National situation rooms issue national early warnings, coordinate early and anticipatory actions, and feed data to the continental system through the sub-regional situation rooms

National Situation Rooms

Subregional situation rooms provide hazard information and bulletins as well as capacity support for early warning and anticipatory action to the national situation rooms

# Priorities for the future

- Standard Operating Procedures (SOPs), protocols for data exchange, recommendations for procurement of systems and equipment for the different situation rooms, including at the national level
- Technical Working Groups considered and analysed appropriate long-term AMHEWAS governance and budgetary arrangements and made proposals to decision makers
- Expand the hazards included in the surveillance, forecasting and early warnings
- Review of governance and coordination mechanisms as well as capacity building for anticipatory action
- Capacity and technical support to integrate disaggregated vulnerability and exposure data for impact based-early warning

# Thank you!